

Ubiko4

Advanced Personal Tracker

- 4 Configurable Speed Dial Buttons and 1 Configurable Emergency Call Button
- OLED Display Allows Inbound SMS Messaging and Up to 20 Address Book Phone Numbers
- Fall Down Alert
- Quad band GSM/GPRS 850/900/1800/1900 MHz
- Internal u-blox chipset
- White OLED display (128*96)
- Inbound SMS display and 20 number address book
- Low power consumption, long standby time with internal battery
- Internal 3-axis accelerometer for power conservation and motion detection including man down alert
- Internal GSM/GPS antennas
- CE/FCC/PTCRB/GCF certified

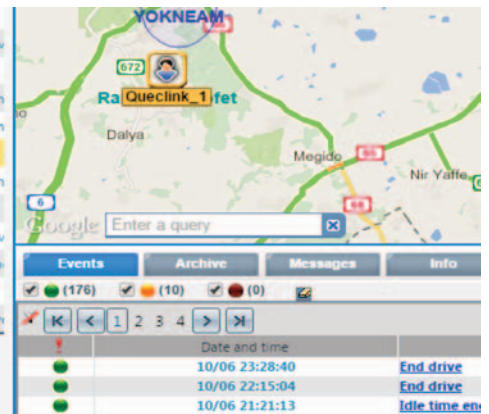


Versatile Personal Tracker

The Ubiko4 is a powerful GSM/GPS safety phone designed for seniors and lone workers. The built-in GPS receiver has superior sensitivity and fast time to first fix. Its quad band GPRS/GSM subsystem supports 850/900/1800/1900 MHz.

With superior receiving sensitivity, fast TTFF (time to first fix) and cellular engine, the Ubiko4 supports real-time location monitoring, or periodic reports from the backend server via the GPRS/GSM network including emergency, geo-fence boundary crossings, low battery, scheduled GPS position (with cell-ID reporting) and man down alert.

Hilik P8	01/06 22:09:02	by pass	GPS
Liana A1	04/06 17:21:48	by pass	End driv
Liana-P8	02/06 17:12:52	by pass	GPS
Liraz-P8	21/05 02:53:55	by pass	Sleep m
P8 Amir	05/11 09:08:18	by pass	Sleep m
Queclick 1	01/06 14:28:18	by pass	System
Shaika 1	09/06 08:35:29	by pass	Sleep m
SmartLog CAN 1	17/05 01:00:23	by pass	GPS
SML4 7.8	07/06 14:44:15	042201	End driv
SML4 9876	05/05 03:00:56	by pass	Over sp
SML4 KZ	17/05 01:00:23	by pass	GPS
TANKLOG Eihud	11/06 01:29:13	by pass	Fuel lev



The Ubiko4 also supports inbound SMS display and a configurable 20 number address book, and many other advanced features. Users can easily dial one of four preset phone numbers by using the quick dial buttons or the SOS button.

Integration with WorldFleetLog

Integration with EDT's WorldFleetLog Web-based tracking and monitoring solution, provides real time vehicle location, vehicle status, and driver behavior data.

Generated Reports based on user-defined parameters are easily accessed by designated fleet managers.

Ubiko4

Advanced Personal Tracker

Technical Specifications

GSM Specifications

Frequency:
Quad band: 850/900/1800/1900 MHz
Compliant to GSM phase 2/2+
-Class 4 (2W @ 850/900
-Class 1 (1 W) @ 1800/1900

GPRS
GPRS multi-slot class 12
GPRS mobile station class B
RMS Phase Error: 5 Degrees

Max RF Output Power:
GSM850/GSM900: 33.0±2 dBm
DCS/PCS: 30.0±2 dBm

Dynamic Input Range:
-15 ~ -108 dBm

GPS Specification

GPS Chipset:
50-channel u-blox All-In-One GPS receiver

Sensitivity:
Autonomous: -147 dBm
Hot start: -156 dBm
Reacquisition: -160 dBm
Tracking: -162 dBm

Position Accuracy (CEP):
Autonomous: < 2.5m
SBAS: < 2.0m

TTFF (Open Sky):
Cold start: 27s average
Warm start: 27s average
Hot start: 1s average

Air Interface Protocol

Transmit Protocol: TCP, UDP, SMS
Scheduled Timing Report:
Report position and status according to preset time schedules

Geo-fence: Supports up to 5 internal geo-fence regions
Low Power Alarm
Power On Report
Power Off Report
SOS/Emergency Alarm: SOS alarm when function key is pressed
Fall Detection: Man down alarm from 3-axis accelerometer

Standby Time

Without Reporting: 190hours
5 Minutes Reporting: 110 hours
10 Minutes Reporting: 120 hours

General Specifications

Dimensions: 87 x 44.5x 17 mm
Weight: 60 g
Charge Voltage: 5V DC
Display: 128*96, 1.3" white OLED Display

Battery: Li-Polymer 850 mAh
Working Humidity: 5% - 90%
Operating Temperature: -20°C to +55°C

Interfaces

Mini USB Connector: For external power and configuration

Power Button: Power on or off device

SOS Button: SOS/Emergency alarm

Volume Adjustable Buttons:
Two side buttons to increase/decrease volume

Dial, Reject Button:
For dialing and rejecting incoming calls or menu selection

4 Preset Number Buttons:
For quick dialing of preset numbers or menu selections

Supported Events

System Events

Emergency
Internal Battery Low
Stop movement
System reset notice

Power Events

Main Power on
Main Power off
Device Disconnect
Device Connected

Temperature Events

High temperature
Low temperature
Normal temperature

Fleet Management Events

Start Trip Fleet
End Trip Fleet
Speed Limit Alert
Sensors 1 & 2 connect/Disconnect

