



product catalog



March 2023

35

YEARS OEM & END-USER
PRODUCT DEVELOPMENT



E₁ | F₁ | F₂ | fuelLog | tankLog | doorLog | smartCam

For more information, visit our website at www.e-drivetech.com

Version 2023_01

Copyright ©2023 EDT. All rights reserved.

This documentation is the property of E-Drive Technology Ltd., and it is confidential. All property rights to this documentation, including the rights of confidentiality and the copyright thereto, are to remain at all times the property of E-Drive Technology Ltd. In no event shall any part of this documentation be reproduced, copied, transmitted, stored in a retrieval system, or translated into any language, by any means or media, without the express prior written permission of E-Drive Technology Ltd. This documentation is provided solely on an "as-is" basis. E-Drive Technology Ltd. makes no warranty expressed or implied, including but not limited to any implied warranties of merchantability or fitness for a particular purpose, regarding this documentation. In no event shall E-Drive Technology Ltd. be liable to anyone for special, collateral, incidental, or consequential damages in connection with or arising from the use of this documentation. This documentation is designed to assist in the use of E-Drive Technology Ltd. products, as of the version specified in this documentation. It may not accurately reflect future versions of the product.

E-Drive Technology Ltd.

W:\Products\Product Catalog

Table of Contents

EDT Cloud-based Fleet and Asset Solutions.....	5
WorldFleetLog	5
World Fleet 2	6
WorldFleetLog Reports	7
Vehicle Performance Reports	7
Driver Performance Reports	8
Vehicle Refuel Reports generated by vehicle.....	9
Fuel Use Trends.....	9
Fleet Management Systems and Solutions.....	10
F1 LTE Basic.....	11
F2 LTE Advanced	11
E1 LTE.....	12
OnBATT	12
3rd Party Tracking and IoT Device Support.....	13
AssetLog.....	14
SmartLock 4G.....	14
Ubiko 3.....	15
Beverage Refrigerator	15
DVR and DashCam Solutions	16
SML-DVR	16
DVR Cameras	16
4G Smart Vision Dash Camera	17
Fuel Management Solutions	18
FuelLog2	18
TankLog.....	19
SmartLog 4 - FLS	19
Start Italiana/Digital Fuel Level Sensor	20
Capacitive Fuel Level Sensor	20
Accessories and Vehicle Security	21
Iridium Satellite Modem	21
RF Modem II	21
Driver Identification	22
Dallas Reader with Emergency Button.....	22
Dallas Reader + LED	22
3 Track Magnetic Card Reader	23
RFID - UUx.....	23
Numeric Keypad	23
Remote Immobilizer (RIM).....	24
Proximity Switch	24
External Buzzer	24
12V DC Power Cable for UU3.....	25
Power Converter - Standard Vehicles	25
Power Converter - Fork Lift Trucks	25
External Relay	26
Emergency Red Button	26
CAN100.....	26
Securi-CAN100.....	27

Table of Contents

Securi-CAN 5	27
Cement Mixer Drum Sensor Solution	28
RF Sensors and Solutions	29
RF Dongle.....	29
RF Temperature and Humidity Sensor	29
RF Temperature Sensor.....	30
RF Motion Detection.....	30
RF Binary (Dry Contact) Sensor.....	30

EDT Cloud-based Fleet and Asset Solutions

WorldFleetLog

EDT's WorldFleetLog cloud-based tracking and monitoring solution provides real time vehicle status and driver behavior data. With hundreds of ad hoc and automatically generated reports based on user-defined parameters, the WorldFleetLog Fleet Management System can make a significant contribution to improved fleet management in any economic sector.

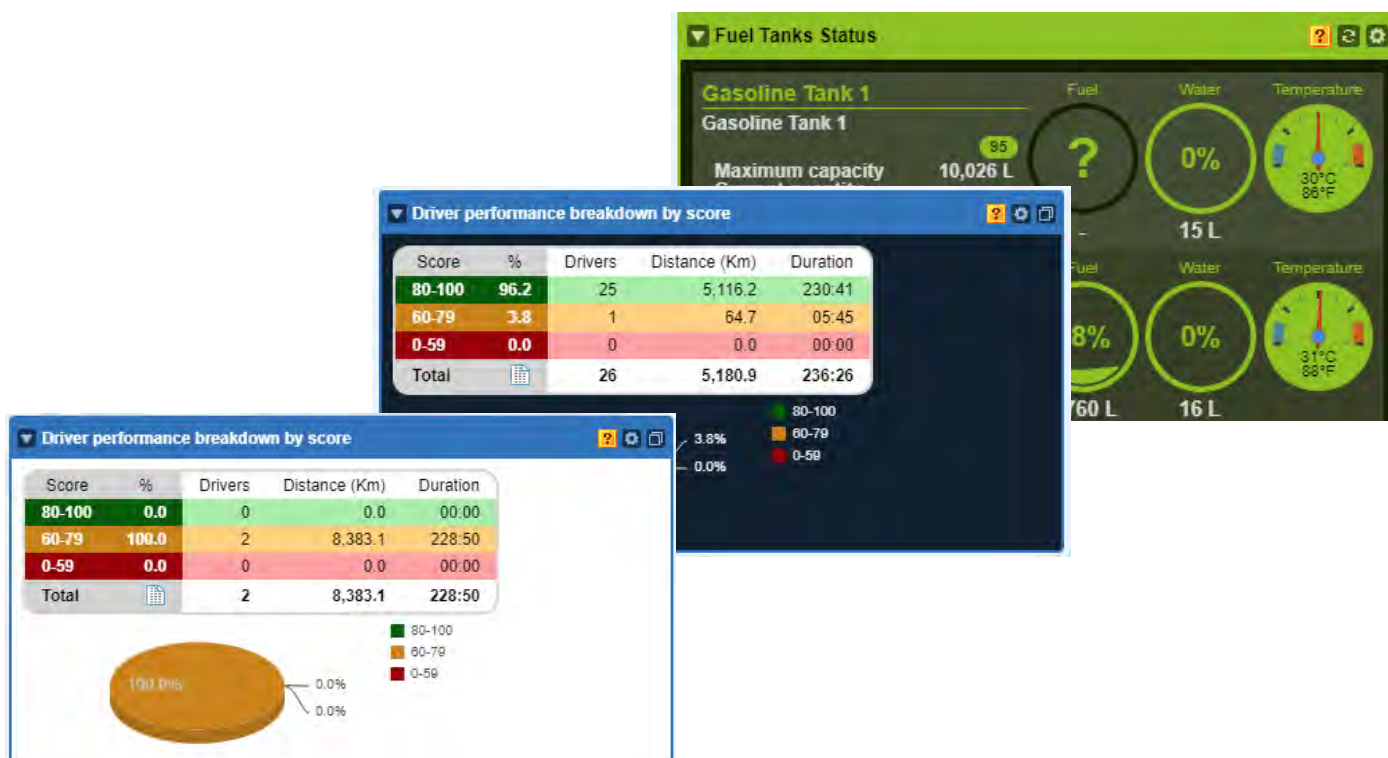
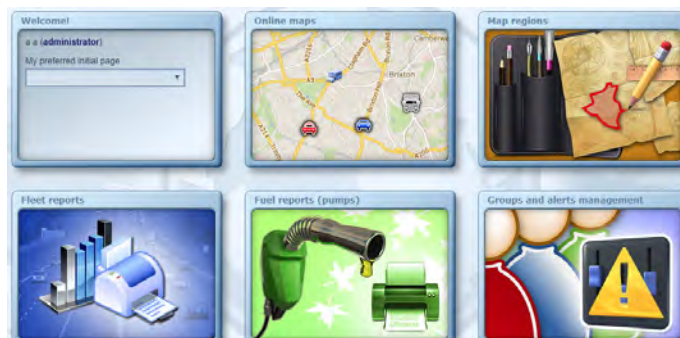
All E-Drive Technology hardware products are managed through WorldFleetLog.

Main Features:

- » As a cloud-based application, WorldFleetLog is accessible from anywhere in the world by designated fleet managers
- » Role-based access levels

The WorldFleetLog modular structure includes:

- » Administrative configurations and management
- » Fleet, driver, and asset management
- » Fuel pump and fuel tanker management
- » A robust report generation engine to create over 350 ad hoc or scheduled reports
- » Real-time online display to track and manage vehicles and assets
- » User-defined dashboard views
- » **And much more...**



World Fleet 2

Fleet Management on the Go!

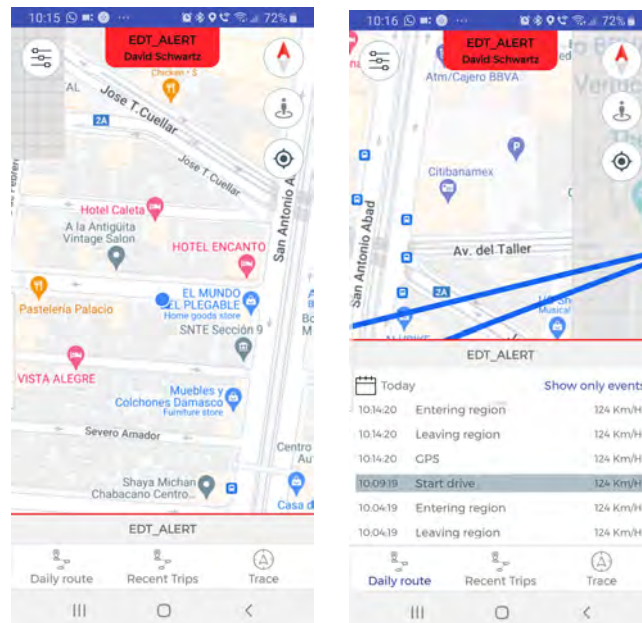
World Fleet 2 is EDT's robust mobile application that is available for Android and iOS. The latest WorldFleet release features an improved, asset-based user interface.

World Fleet 2 provides WorldFleetLog users access to their assets from anywhere in the world.

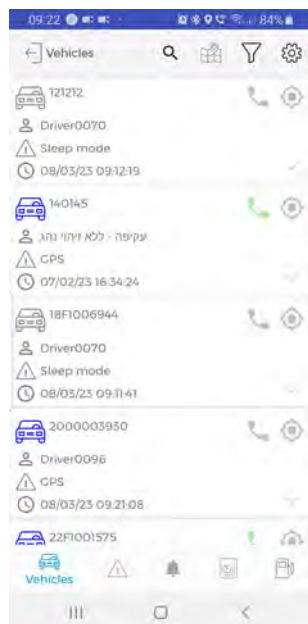
World Fleet 2 is available from the Google Play Store.

Main Features:

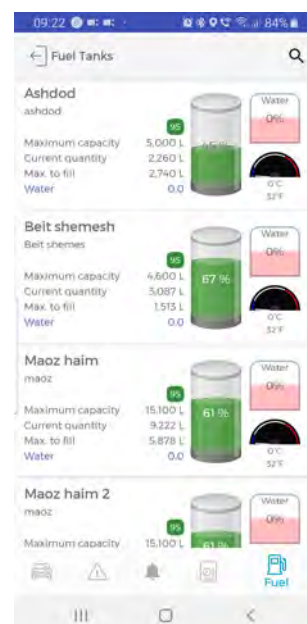
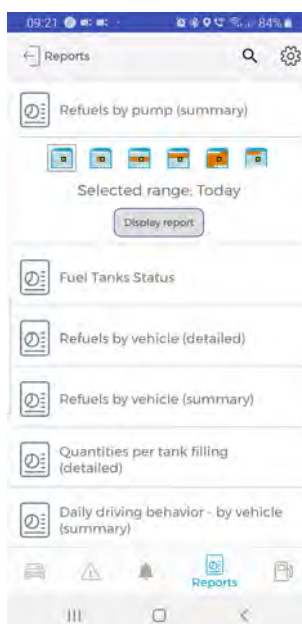
- » Secure login to the WorldFleetLog server
- » Select vehicles and devices based on World-FleetLog settings
- » Quickly acquire vehicle information including driver, current speed, odometer reading and GPS status
- » Focus on specified vehicle or asset and easily drill down to relevant information
- » Send commands to selected device
- » Events view
- » Alerts support by Push notification
- » Camera views (if DVR system is installed)
- » Track selected device



Sample Vehicle Alert on Map Screens



Sample Vehicle Screens



Sample Fuel Tank Screen

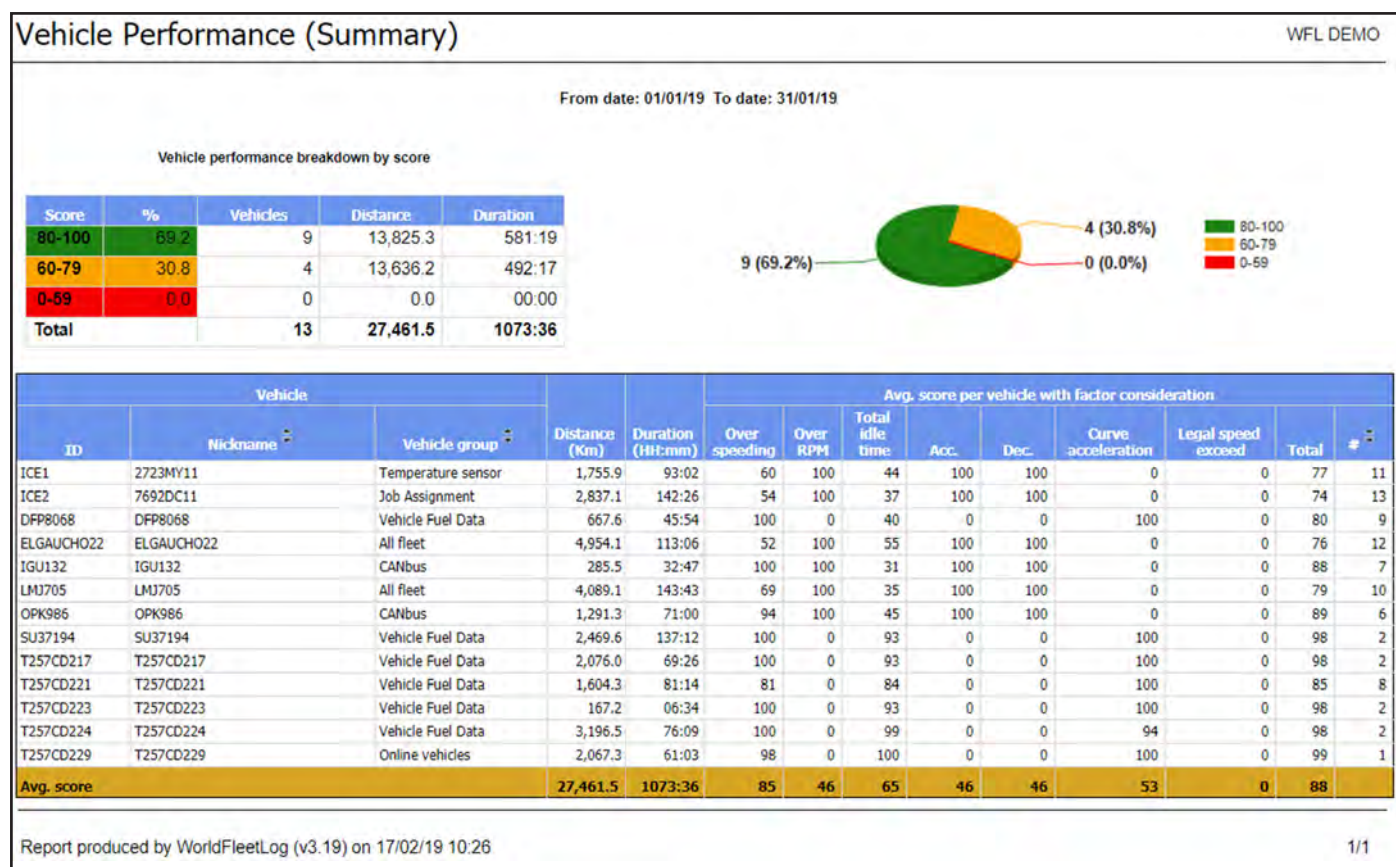
WorldFleetLog Reports

WorldFleetLog integrates data gathered by EDT's in-vehicle devices, fuel management products, asset trackers, and sensors to create over 350 reports so fleet managers can make real-time decisions for increased productivity, improved safety and greater fleet profitability.

WorldFleetLog supports PDF, Excel and CSV data export formats and easily integrates with ERP programs for integrated management solution.

The following example reports are a small selection of the WorldFleetLog report capabilities.

Vehicle Performance Reports



Driver Performance Reports

Generated reports show the defined performance criteria and each individual driver's performance.

Driving behavior rank - by driver

TEMA OIL REFINERY

From date: 04/02/19 To date: 10/02/19

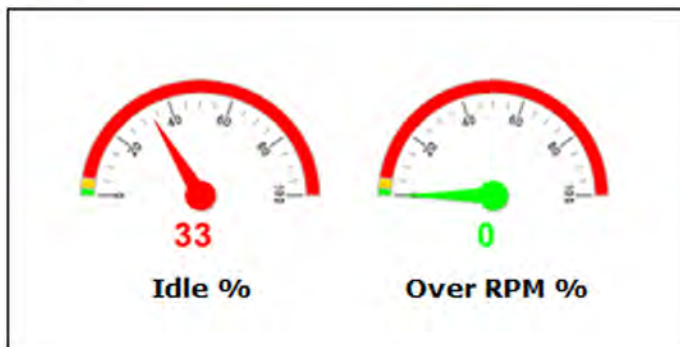
Name: Issac Acquah

ID: 0000000005

Safety ranking



Fuel



41:45:11

14:05:01

38:59:00

305.9

171

⌚ Duration

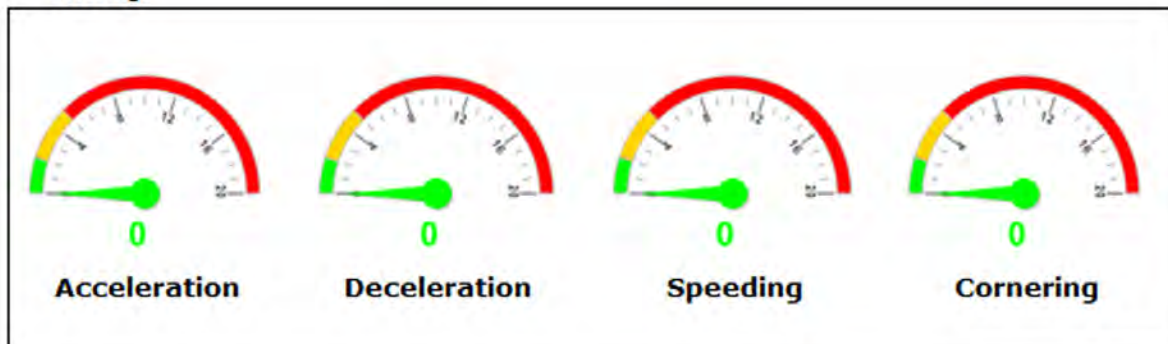
⌚ Idling

⌚ Engine hours

📄 Distance

🚩 Trips

Driving



Vehicle Refuel Reports generated by vehicle.

Refuels by vehicle (summary)

WFL DEMO

From date: 01/10/14 To date: 08/11/14

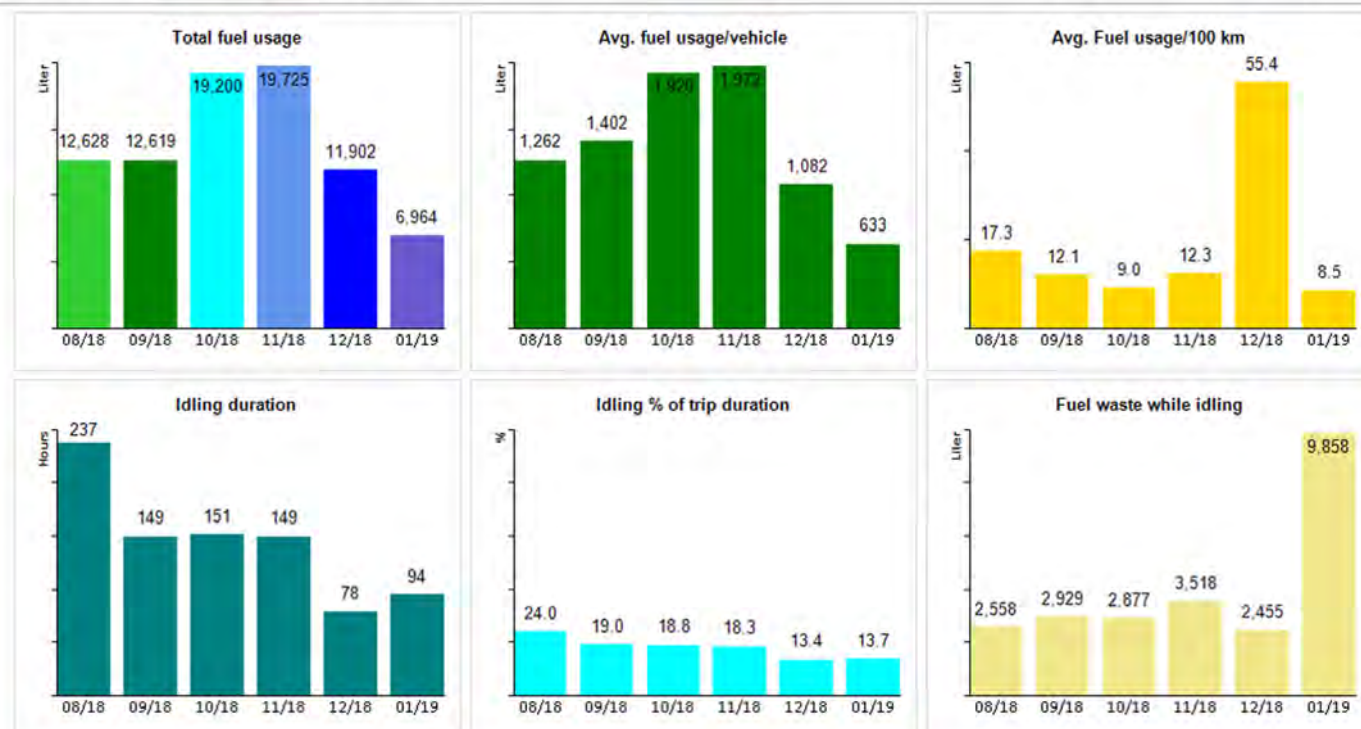
Vehicle							Date		Distance	Total	
Plate number	ID	Vehicle type	Nickname	Group name	Fuel type	Cost Center	Start	End	(Km)	Cost (\$)	Quantity (L)
C 73238	TS_TS204	Cabezal	TS-204	FLOTA SEBASTIAN	Diesel	TS Viajes	01/10/14	06/11/14	837.1	534.40	308.9
C 73372	TS_TS212	Cabezal	TS-212	FLOTA SEBASTIAN	Diesel	TS Viajes	06/11/14	06/11/14		261.23	151.0
C 74169	TS_TS211	Cabezal	TS-211	FLOTA SEBASTIAN	Diesel	TS Viajes	01/10/14	08/11/14	938.6	770.02	445.1
C 74190	TS_TS218	Cabezal	TS-218	FLOTA SEBASTIAN	Diesel	TS Viajes	18/10/14	05/11/14	332.0	529.38	306.0
C 74571	TS_TS217	Cabezal	TS-217	FLOTA SEBASTIAN	Diesel	TS Viajes	03/10/14	08/11/14	1,102.4	918.63	531.0
C 74572	TS_TS202	Cabezal	TS-202	FLOTA SEBASTIAN	Diesel	TS Viajes	08/11/14	08/11/14		202.41	117.0
C-100408	TS_R18	Cabezal	R-18	MORECA	Diesel	Moreca Viajes	03/11/14	03/11/14		115.91	67.0
C-100410	TS_R17	Cabezal	R-17	MORECA	Diesel	Moreca Viajes	03/11/14	03/11/14		107.26	62.0
C-103837	TS_R21	Cabezal	R-21	MORECA	Diesel	Moreca Viajes	03/11/14	06/11/14	80.0	346.00	200.0
C-104261	TS_TS125	Cabezal	TS-125	FLOTA SEBASTIAN	Diesel	TS Viajes	04/10/14	07/11/14	90,083.0	752.38	434.9
C-105289	TS_TS134	Cabezal	TS-134	FLOTA SEBASTIAN	Diesel	TS Viajes	02/10/14	17/10/14	2,779.0	205.87	119.0
C-105309	TS_TS136	Cabezal	TS-136	FLOTA SEBASTIAN	Diesel	TS Viajes	03/10/14	14/10/14	2,030.0	211.06	122.0
C-105466	TS_TS143	Cabezal	TS-143	FLOTA SEBASTIAN	Diesel	TS Viajes	14/10/14	03/11/14	97.4	385.80	223.0
C-105505	TS_TS145	PICKUP	TS-145	FLOTA SEBASTIAN	Diesel	TS Viajes	01/10/14	05/11/14	3,868.0	726.60	420.0
C-105630	TS_TS147	Cabezal	TS-147	FLOTA SEBASTIAN	Diesel	TS Viajes	06/11/14	07/11/14	249.4	420.39	243.0
C-105631	TS_TS149	Cabezal	TS-149	FLOTA SEBASTIAN	Diesel	TS Viajes	02/10/14	07/11/14	811.0	689.22	398.4
C-105722	TS_TS152	Cabezal	TS-152	FLOTA SEBASTIAN	Diesel	TS Viajes	02/10/14	08/11/14	1,477.8	766.05	442.8
C-106612	TS_ST36	Cabezal	ST-36	FLOTA SEBASTIAN	Diesel	TS Movimientos	01/10/14	03/11/14	45,570.0	702.22	405.9
Total									1,280,282.1	33,406.50	19,310.1

Fuel Use Trends

Easily identify fuel use trends over an extended time frame.

Fuel Consumption - Last Six Months Trends

WFL DEMO



Fleet Management Systems and Solutions

EDT's field-proven products provide fleet managers with a variety of integrated end-to-end fleet management solutions to improve efficiency, accountability, and overall company profitability.

EDT's fleet management systems and solutions are used in every economic sector including:

- » Tier-1 private sector automotive manufacturers
- » National and local government ministries and departments
- » Private sector manufacturing and logistics companies
- » Banking and finance institutions
- » Agriculture - EDT products are used for complete end-to-end field and asset management solutions around the world.

You must effectively manage a wide variety assets and resources to maintain their competitive edge and profitability. Since fleet operations represent a significant capital investment and ongoing expense, fleet managers must develop strategies to address the following issues:

- » Improve driver efficiency and performance
- » Increase the number of deliveries while reducing overtime costs
- » Reduce accidents and vehicle wear and tear
- » Locate the best routes to ensure on-time deliveries
- » Optimize vehicle maintenance and reduce break downs
- » Eliminate unauthorized vehicle use and moonlighting
- » Record who was driving your vehicle at any time
- » Manage risk and potentially reduce insurance costs
- » Improve worker productivity by integrating headquarter-based management information into company vehicles

Collectively, these issues define the Mobile Resource Management (MRM) cycle.

Using EDT's fleet management solutions for Mobile Resource Management optimization, fleet managers succeed in reducing fleet management costs by 12%-30%.

EDT's fleet management solutions provide critical and actionable information via cloud-based Web application for real time vehicle and asset tracking, route verification and geo-fencing from anywhere in the world.

F1 LTE Basic

The F1 LTE Basic fleet management system features an LTE CatM1 modem + 2G modem with support for a variety of external modems for Iridium satellite network, WiFi or, RF communication options.

The F1 LTE Basic includes an on-board CAN Bus J1939 transceiver and supports OBDII via external transceiver to provide a robust set of fleet management and driver behavior events and alerts.

The F1 LTE Basic can log up to 50 days of messages based on an average 8-hour drive per day with tracking messages every 30 seconds.

Main Features:

- » Internal CAN/ Bus for J939
- » 1 RS232 Interface
- » Ignition + 2 discrete inputs
- » 1 Analog Input
- » Internal immobilizer
- » 3-axis Accelerometer
- » Backup battery: 2000 mAh
- » Supports OTA FW upgrade
- » Internal GSM/GPS antennas
- » Supports CANBus adapter

Ordering Information:

- » P/N F1-LTE Basic



F2 LTE Advanced

The F2 LTE fleet management system features an internal NB/CatM modem with 2G fallback with support for an external modems for an Iridium satellite network fallback option, WiFi or, RF communication options. The F2 LTE includes an on-board CAN Bus J1939 transceiver and supports OBDII via external transceiver to provide a robust set of fleet management and driver behavior events and alerts.

The F2 LTE can log up to 400 days of messages based on an average 8-hour drive per day with tracking messages every 30 seconds.

Main Features:

- » Internal CANBus for J939
- » 3 RS232 ports
- » 2 pulse inputs for RPM and odometer
- » Ignition + 3 discrete inputs
- » 6 discrete outputs
- » 2 Analog inputs
- » 3-axis Accelerometer
- » Backup battery: 2000 mAh
- » Internal GSM/GPS antennas
- » Supports OTA FW upgrade
- » Internal BLE
- » Supports 2 fuel level sensors
- » Supports CANBUS adapter

Ordering Information:

- » P/N F2-LTE



E1 LTE

The E1 is a low-cost, automotive grade fleet management and tracking solution that features an LTE CatM1 + 2G modem. The E1 LTE can log up to 50 days of messages based on an average 8-hour drive per day with tracking messages every 30 seconds.

The E1 supports remote immobilization/mobilization and advanced backup battery management.

Main Features:

- » Ignition
- » 1 configurable I/O
- » Internal immobilizer
- » 3-axis Accelerometer
- » Backup battery: 2000 mAh
- » Internal GSM/GPS antennas
- » Supports OTA FW upgrade

Ordering Information:

- » P/N E1-LTE



OnBATT

EDT OnBATT is a small size vehicle tracking device, designed to enable fast installation on a vehicle battery. EDT OnBATT supports applications such as UBI (usage based insurance) and provides a waterproof casing, standard short range wireless communication for accessories, add-ons and integration with mobile applications.

Main Features:

- » LIN Bus interface
- » 1 digital input
- » 3-axis accelerometer
- » Driver behavior monitoring and real-time accident detection with 20 predefined maneuver types in three levels: Normal, Aggressive, Dangerous
- » Backup battery: 350 mAh
- » Waterproof
- » Fully integrated with WorldFleetLog to for real-time location and management

Ordering Information:

- » P/N OnBATT



3rd Party Tracking and IoT Device Support

The WorldFleetLog platform now supports a continuously growing list global hardware manufacturers in addition to EDT products.

A partial list of supported hardware manufacturers includes:

- » Teltonika
- » Navtecom
- » Queclink
- » Ruptela
- » Galileosky
- » Jimi IoT
- » BCE
- » ArusNavi
- » Suntech
- » CalAmp
- » Topin GT01 - a well adapted solution to track laptop computers
- » ST-901 - specially designed for motorcycles

For more information, please contact the EDT support team.



Teltonika



Navtecom



Queclink



ST-901



AssetLog

AssetLog is a long life trailer and asset tracking device highly recommended by industry leaders for use in trailer and asset security management operations.

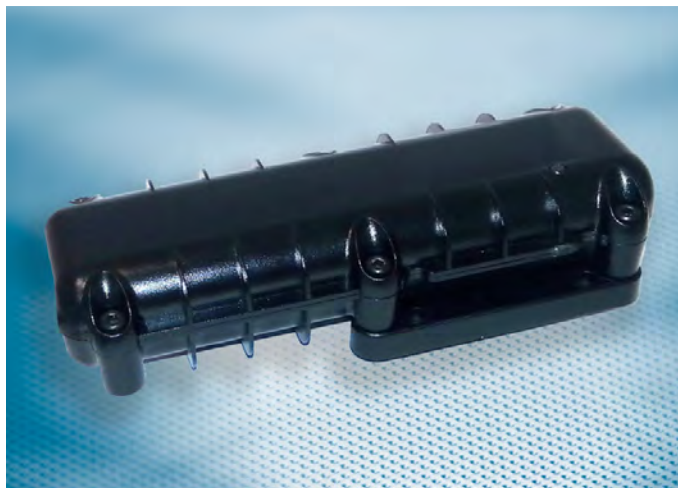
Integration with EDT's WorldFleetLog Web-based tracking and monitoring solution, provides real time location and status data. Generated Reports based on user-defined parameters are easily accessed by designated managers.

Main Features:

- » Long life functionality - up to 2000 transmissions in fully charged battery
- » 2G or 3G support
- » Water and vibration resistant/IP67
- » Integrated accelerometer to detect motion, movement in order to enhance battery life and efficiency
- » Data Logger can store 10,000 messages
- » Supports solar panel battery recharge
- » Smart battery power conserving functionality
- » Easy installation with a strong magnets set
- » 5800mAh integrated backup battery

Ordering information:

- » P/N AssetLog-2G
- » P/N AssetLog-3G



SmartLock 4G

SmartLock 4G is an intelligent tracking and positioning lock to ensure the safety of logistics and freight assets. It has RFID / remote unlocking; large capacity battery; built-in GPS Module, illegal unlock alarm etc.

Bluetooth can be used to monitor temperature and humidity sensor signals of the cargo compartment or container.

Main Features:

- » Supports 2G/3G/4G network
- » Built in Bluetooth connect to wireless sensor
- » Main battery 15000 mAh
- » Includes 500 mAh backup battery for emergency unlock
- » IP67

Ordering information:

- » P/N SmartLock 4G



P/N UBIKO3

The water resistant Ubiko3 is a powerful GNSS locator designed for lone worker, vehicle, pet and asset tracking applications.

Main Features:

- » Multiple GNSS support with u-Blox M8 chipset
- » Vibration feedback confirming successful button operation
- » Thumb-sized button for easy emergency alert operation
- » Water resistant
- » Full power management protocol
- » 200 hour standby time, up to 200 days standby with external battery accessory
- » Fully integrated with WorldFleetLog to for real-

time location and management

- » Temperature operating range: -40 to +85 °



Beverage Refrigerator

Integration with EDT's WorldFleetLog Web-based tracking and monitoring solution provides refrigerator location, current and historical temperature status, refrigerator use, and agent visit data. Generated Reports based on user-defined parameters are easily accessed by designated managers.

Data and alerts generated by the beverage refrigerator tracker and temperature monitoring solution are also available with EDT's free World Fleet app.

Main Features:

- » GPS locator with internal antennas (no exposed antenna)
- » Temperature sensor for 24/7 temperature monitoring
- » Provides location and alerts based on POIs and geo-fences to detect if the beverage refrigerator is on the move
- » Supports digital sensors to log open door/close door activity to record beverage refrigerator use
- » Supports the EDT barcode reader app to identify and record agent visits
- » WorldFleetLog provides a variety of reports and graphs to visualize beverage refrigerator temperature, use statistics and agent interactions with the system.

Supported Peripheral Devices:

- » Temperature Sensor
- » Digital Switch



DVR and DashCam Solutions

SML-DVR

The SML-DVR-4G-SD uses cellular and wireless technologies to stream high-quality live or recorded video from mobile or stationary applications to remote client devices.

The EDT DVR solution is available in the following configurations:

- » SML-DVR-4G-SD: 4-channel DVR, up to 256GB (2 128GB SD cards - Not included) + GPS and 4G Modem
- » SML-DVR-4G-2TB: 4-channel DVR, up to 2TB (2.5" HDD/SSD - Not included) + GPS and 4G Modem
- » SML-DVR-8CH-4G-2TB: 8-channel DVR, up to 2TB (2.5" HDD/SSD - Not included) + GPS and 4G Modem
- » SML-DVR-3G-WIFI-SD: 4-channel DVR, up to 256GB (2 SD Cards 128GB each - Not included) + GPS, 3G Modem and WiF
- » SML-DVR-3G-WIFI-2TB: 4 channels DVR, up to 2TB (2.5" HDD/SSD - Not included) + GPS, 3G Modem and WiFi

Main Features:

- » Synchronized A/V recording and playback
- » Resolutions: 4 x 720P AHD or 4 x 960H / D1 / HD1 / CIF + 1 x IPC (720P / 1080P)
- » Internal G-sensor and GPS
- » Ruggedized for long life under difficult terrain conditions
- » Download remotely or from the SD Card

Supported Peripheral Devices:

- » A/V output supports an in-vehicle monitor
- » Option for Wi-Fi (5.8 GHz)

Ordering information

- » P/N SML-DVR-4G-SD



DVR Cameras

Main Features:

- » **P/N SML4-CMR-OC:** AHD Camera, IR LEDs, IP67, f3.6mm lens, 1.3 Mega Pixel
- » **P/N SML4-CMR-IC:** AHD Camera, f2.8mm lens, 1.3 Mega Pixel + Microphone
- » Indoor/outdoor performance
- » Functions over a wide range of ambient light conditions

Supported Peripheral Devices:

- » A/V output supports an in-vehicle monitor
- » Option for Wi-Fi (5.8 GHz)



P/N SML4-CMR-OC



P/N SML4-CMR-IC

4G Smart Vision Dash Camera

P/N 4G Smart Vision

This device is a 4G three channel (Front cam + IR night vision inside camera + rear camera) driving recorder with high-definition, ADAS, one-button alarm, GPS driving track & position, WiFi hotspot, 4G high-speed video downloading.

4G Smart Vision is integrated with EDT's WorldFleetLog cloud-based tracking and monitoring solution.

Main Features:

- » Video resolution: Front Camera is 1920x1080P resolution with 180°rotation@25fps,
- » Inside and rear cameras: GC2053 image sensor, F=2.0, 6G lens with 125°view AHD720p@25fps
- » Simultaneous recording on all three cameras
- » WiFi 2.4G 802.11b/g/n
- » ADAS support for Lane departure warning, forward vehicle moving warning, forward vehicle collision warning
- » Built-in microphone
- » 6-axis G sensor
- » Loop recording: support max 256G SD card for this function
- » Parking Monitor
- » I/O: MicroSD TF card support up to 256 GB



Fuel Management Solutions

Versatile Fuel Management Solutions

EDT provides computerized fuel management products provide solutions for four specific fuel management challenges:

- » Unattended and enterprise fuel pumps and fuel stations
- » Mobile fuel tankers
- » Large tank and tank farm management
- » Generators with in-built fuel tanks

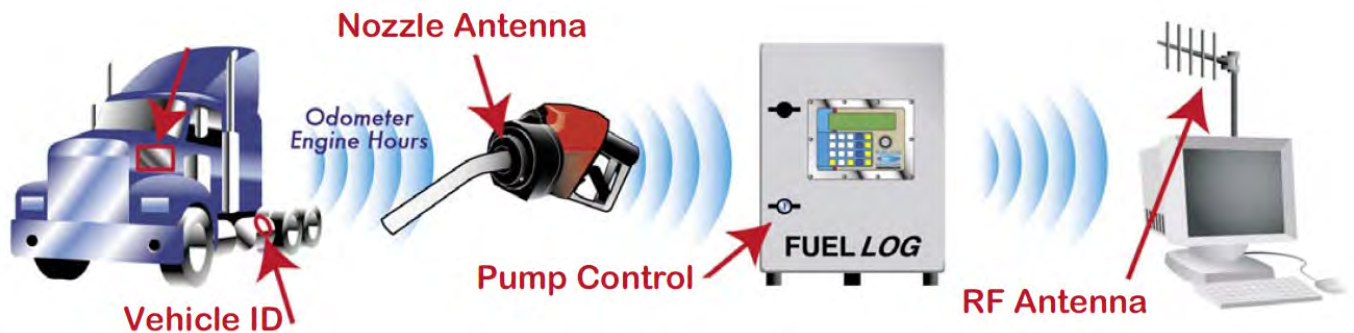
EDT fuel level solutions support a variety of fuel level sensor types and technologies.

FuelLog2

P/N FuelLog

FuelLog2 is an independent fuel pump control system to manage private fuel stations and mobile tankers. Rugged construction makes the FuelLog2 an ideal solution for fuel stations in the field.

FuelLog2 integrates with additional EDT software and hardware fleet management products for a complete fleet management solution.



Main Features:

- » Rugged and durable construction
- » Available in single or dual nozzle versions
- » Secure access to unattended fuel supplies
- » Versatile data transmission scenarios
- » Can record fuel deliveries for reconciled fuel reports
- » Supports variable refuel scenarios based on the order of driver and vehicle identification.

Supported Peripheral Devices:

- » Smart Mile - provides odometer and engine hour readings
- » Numeric keypad
- » Magnetic card reader
- » Dallas iButton
- » 3G modem



P/N SML-RF-HT-SENS

TankLog supports multiple fuel level sensors, and provides a tank monitoring solution for single fuel tanks and tank farms. TankLog is part of the EDT FuelLog and IVD suite of fuel management products that provide you a total fuel management solution.

TankLog supports multiple fuel level sensors, and provides an economic solution for tank farms and sites where fuel tanks are located up to 2 kilometers from the unit.

Main Features:

- » Continuously log and monitor fuel tank levels in remote locations
- » Rugged construction makes TankLog suitable for any environment
- » EDT's WorldFleetLog Web application and mobile application display fuel levels
- » Reliably supports dozens of probe inputs
- » Supports user-defined alert triggers with real-time notification by SMS and e-mail.

Supported Devices:

- » Magnetorestrictive and capacitance probe technologies
- » Standalone, mobile and fuel tank farm applications
- » RF receiver/RS232 or wired with RS485/RS232

**SmartLog 4 - FLS****P/N FuelLog**

SmartLog 4 - FLS is an integrated fuel level solution for generators, mobile tanks, and stationary fuel tanks. SmartLog 4 - FLS delivers fuel level information directly to EDT's WorldFleetLog Web-based management application for analysis and automatic alert and report generation.

**Applications:**

Supports fuel level sensors with either analog or serial data output for the following applications:

- » Stationary fuel tanks
- » Mobile (Vehicle) fuel tanks
- » Generators with integrated fuel gauge
- » Generators with external fuel level sensor

Main Features:

- » High precision fuel measurement
- » Wide range of possible probe lengths, depending on probe model.
- » Easy to install the probe.

Supported Probes:

- » SmartLog 4 - FLS-ES
- » SmartLog 4 - FLS-EN

Start Italiana/Digital Fuel Level Sensor

P/N FuelLog SML4-FSSI-AXXXX

Wired RS485 Magneto-strictive Tank Probe

Main Features:

- » High precision fuel level measurement
- » Detect water level via independent water float
- » Fully supported by WorldFleetLog
- » Includes fuel level and water level alerts



Capacitive Fuel Level Sensor

P/N FuelLog FLS-ESxxx

This probe is applicable for solutions that require high-precision fuel measurement and fuel management.

Main Features:

- » Output signals: Analog, V; Frequency, Hz; RS-232; RS-485; CAN
- » IP67 ingress protection
- » Applications: Transport companies; Building and construction machinery; Public transport; Agricultural vehicles; Mining companies



Accessories and Vehicle Security

EDT's FMS products lines support a variety of accessories including the following external modems for special applications:

- » Iridium Satellite Network Modem
- » 4G-LTE modem
- » RF Modem
- » CAN bus adaptors
- » Power convertors
- » Support for specialized applications

Additional accessories include:

- » iButton, magnetic card, and RF Driver identification methods
- » Vehicle security

Iridium Satellite Modem

P/N SML4-SAT-Modem

The Iridium 9603 transceiver combines the global coverage of the Iridium satellite constellation with the low latency of the Iridium Short Burst Data Service to provide highly reliable satellite communications from pole to pole.

Main Features:

- » Automotive grade components
- » Supports automatic fallback when GSM/GPRS networks are not available
- » Short backup message and algorithm to reduce data charges



RF Modem II

P/N CR012 - 2007

RF-Modem II can be connected and fully operated from the PC with the EDT RF Receiving Station Software from the FuelLog and SmartLog01/02 units.

RF vehicle tracking solutions are used in areas where there is poor GSM reception

Main Features:

- » Data transfer up to 1,000 feet with proper antenna.
- » Operates in the license-free 433.92 MHz ISM frequency band range
- » Low power consumption



Driver Identification

EDT driver ID devices may be used in combination with each other to provide additional levels of identification and security. The following driver ID devices are supported:

- » Dallas technologies iButton reader with integrated emergency button
- » Standalone Dallas iButton
- » 3-track magnetic card reader RFID for UU3
- » Numeric Keypad RFID for UU3
- » Numeric Keypad

Dallas Reader with Emergency Button

P/N GM DS01

The Dallas iButton reader is a cost-effective driver identification solution that enables users to implement, unique configurable driver permission and charge codes.

Main Features:

- » Integrated emergency button
- » 1-wire technology
- » LED indications



Dallas Reader + LED

P/N GM DS01

The Dallas iButton reader with integrated LED can be used when an integrated emergency button is not required.

Main Features:

- » Integrated emergency button
- » 1-wire technology
- » LED indications



3 Track Magnetic Card Reader

P/N CR002-3Track

Three-track magnetic card reader for UUx or SML5

Main Features:

- » Supports magnetic cards with three tracks
- » May be used together with the numeric keypad



RFID - UUx

P/N RF_ID_1_wire

The UUx FMS platform supports a 125kHz RFID reader that is based on the 1-Wire protocol.

Main Features:

- » Supports magnetic cards with three tracks
- » May be used together with the numeric keypad



Numeric Keypad

P/N RF_ID_1_wire

P/N CB-SML4-COD/12; CB-UU3-COD/12

The numeric keypad works as a stand-alone driver ID device or together with the Dallas iButton reader.

Main Features:

- » Supports user-defined codes of up to 10 digits
- » May be used with additional driver ID devices including RF ID, magnetic card reader, or Dallas iButton reader
- » Supported by both SMLx and UUx FMS platforms



Remote Immobilizer (RIM)

P/N RIM

The UUx, SMLx , and Fx FMS platforms each support multiple RIM devices to expand vehicle security.

Main Features:

- » RIM devices are managed individually
- » RIM master IDs



Proximity Switch

P/N CB-SML4-MS

Magnetic switch to provide digital input. Supported by all EDT FMS platforms.

Main Features:

- » RIM devices are managed individually
- » RIM master IDs



External Buzzer

P/N PCH42160W

The external buzzer provides a user-defined audible indication for designated events.

Main Features:

- » Supported by the UUx, SMLx, and F1 FMS platform



12V DC Power Cable for UU3

P/N CB-UU3-PLUG

Use the UU3 12V power cable for UU3 portable or mobile asset tracking applications .

Main Features:

- » Quick installation for special UU3 applications



Power Converter - Standard Vehicles

P/N CR48_12

The CR48_12 is a DC/DC power converter that extends EDT's FMS application range to cover vehicles with 48 VDC electrical systems.



Power Converter - Fork Lift Trucks

P/N CR160_12

The CR160_12 is a DC/DC power converter specially designed 160VDC electric powered fork lift trucks with EDT tracking devices.



External Relay

P/N CB-SML4-IM-12

All EDT FMS solutions support an external relay for 12V and 24V vehicle electrical systems.

Main Features:

- » Can be used for vehicle immobilization
- » Increase EDT FMS versatility to a variety of applications



Emergency Red Button

P/N CBCRLG-6B

Use the Emergency Red Button to enable emergency alerts when the combination Dallas driver ID is not required.

Main Features:

- » Simple installation
- » Compatible with all EDT products.



CAN100

P/N SML4-CANBUS

CAN100 relays information gathered from all vehicle types (trucks, buses, tractors, and passenger vehicles) via RS-232 based protocol, which is not dependent from car make or model. New vehicle models are constantly added to the CAN100 database.



Main Features:

- » Supports Protocol CAN 2.0A, CAN 2.0B J1939, FMS 3.0, CanOpen, Single-wire CAN and a lot of custom manufacturer's protocols, and J1708 / J1587
- » Firmware update via serial port
- » Automatic synchronisation with vehicle

Supported Perpheral Devices:

- » Supports the SECURI-CAN100 inductance connection for noninvasive CAN Bus connections.

Securi-CAN100

P/N SECURI-CAN100

Inductance connector for inductive CAN Bus connections based on the CAN100.

Main Features:

- » Allows connection to vehicle CAN Bus data without the need to tap or cut vehicle wires
- » Quick installation and easy device configurations save time



Securi-CAN 5

P/N SECURI-CAN5

Inductance connector for noninvasive CAN Bus connections for CAN Bus installations based on the F1 and SmartLog CAN Bus connection.

Main Features:

- » Allows connection to vehicle CAN Bus data without the need to tap or cut vehicle wires
- » Quick installation and easy device configurations save time



Cement Mixer Drum Sensor Solution

P/N SML4-CMD

The cement mixer drum sensor together with the SmartLog FMS provides a complete cement truck management solution. The EDT concrete mixer drum rotation sensor is designed to work with the SmartLog 5 FM/VTS device.

Main Features:

- » Drum rotation logs
- » Vehicle location by GPS
- » Mixer start time/end time
- » Concrete discharge start time/ end time



RF Sensors and Solutions

EDT SmartSense RF receivers and sensors are fully integrated with the SmartLog5 in-vehicle tracker to display real-time sensor data. EDT's WorldFleetLog Web application provides detailed and summarized sensor activity reports.

Sensor Types

- » Analog temperature/humidity sensors
- » Digital sensors - to track open door/close door valves, or any other binary action
- » RF ID tags to identify multiple trailers in the field

Applications and Solutions

Use SmartSense RF sensors for the following applications and solutions:

- » Use door and temperature sensors as part of a complete cold chain storage and delivery solution for perishables such as food and pharmaceuticals
- » Manage beverage cooler status and use over large, remote geographical areas
- » Manage chemical and fertilizer application rates as part of EDT's overall agriculture solution set
- » Use where direct wiring may not be feasible
- » Save time with simplified sensor installations

RF Dongle

P/N SML-RF-DONG-4 or SML-RF-DONG-6

Connects to the FMS RS232 connector.

Main Features:

- » Agro tag casing
- » 433MHz Radio Frequency
- » Effective range up to 60 meters
- » Supports motion, angle change, tamper detection & NO/NC external sensors

Supported Peripheral Devices:

- » SmartLog 4
- » SmartLog 5
- » F1 + Hub (TBD)



RF Temperature and Humidity Sensor

P/N SML-RF-HT-SENS

Main Features:

- » Provides temperature and humidity data
- » Temperature operating range: -10 to +85 °
- » ± 3% RH (max), 0–80% RH

Supported Peripheral Devices:

- » SmartLog 4
- » SmartLog 5
- » F1 + Hub (TBD)



RF Temperature Sensor

P/N SML-RF-TEMP-SENS

Main Features:

- » Measure range -55°C to +125°C
- » $\pm 0.5^\circ\text{C}$ Accuracy from -10°C to +85°C

Supported Peripheral Devices:

- » SmartLog 4
- » SmartLog 5
- » F1 + Hub (TBD)



RF Motion Detection

P/N SML-RF-MOVE

Main Features:

- » Programmable: movement detection/ angle change, etc

Supported Peripheral Devices:

- » SmartLog 4
- » SmartLog 5
- » F1 + Hub (TBD)



RF Binary (Dry Contact) Sensor

P/N SML-RF-CONT

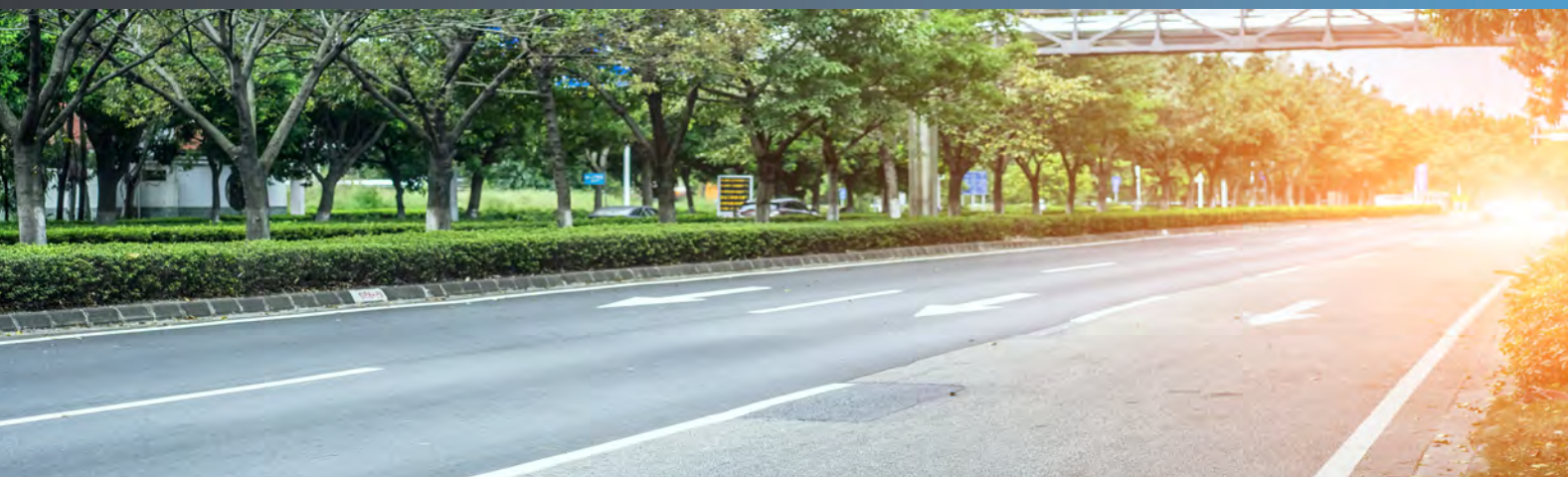


Main Features:

- » 2 external Inputs 30-0V or dry contact, 2 Open collector outputs

Supported Peripheral Devices:

- » SmartLog 4
- » SmartLog 5
- » F1 + Hub (TBD)



 E₁ | F₁ | F₂ | fuelLog | tankLog | doorLog | smartCam