

# WorldFleetLog

With you all the way...

## A Complete Solution

WorldFleetLog is a dynamic Web-based application to display and manage data compiled from EDT fleet and fuel management products.

## Fleet & Asset Management

Real-time alerts provide driver behavior indications and while automatically generated reports document driver safety, idling, harsh driving habits, and fuel use by vehicle, driver or project.

The vehicle maintenance module provides scheduling and spare parts management to positively impact the corporate bottom line.

WorldFleetLog also allows managers to scan and store vehicle and driver related documents online.

## Fuel Management

WorldFleetLog provides fleet managers an end-to-end fuel management solutions including support for stationary and mobile tankers for fuel level logging, refuel, and fuel loss alerts.

## Mobile App

WorldFleetLog is available as a mobile app for download from the iStore or Google Play Store..

## WorldFleetLog Key Features

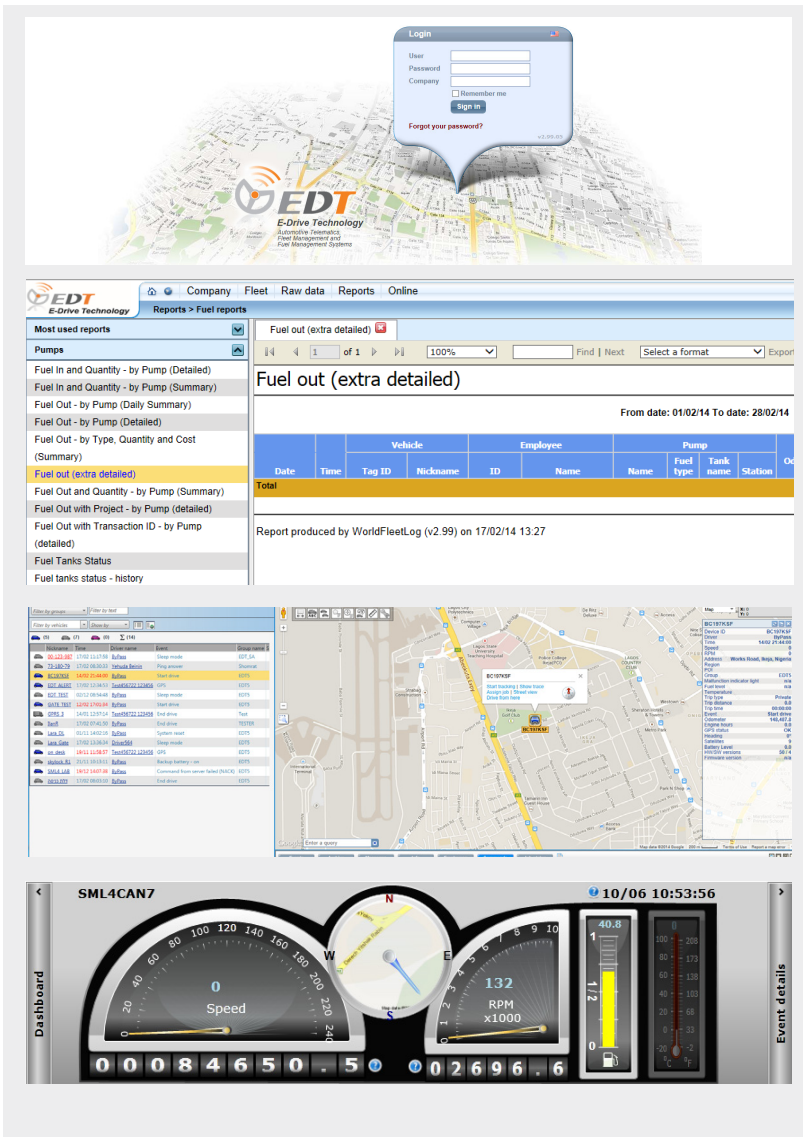
- Set company specific parameters, hierarchy and delegations
- Manage vehicles and drivers individually, by project, or by department
- Easily scalable to support locations both with large and small fleets
- Integrated enterprise fuel pump management provides reconciled vehicle/driver/trip and refuel records
- Fully supports driver behavior parameters for fleet management by exception
- Supports more than 15,000 online vehicles on each ASP site
- Supports Google Maps and Open Street Maps Google Map support for Region & POI management and alerts.
- Built-in map engine supports vector and scanned maps from all map vendors
- Map tools for zoom, pan, address search, add customer POI, map layers, job assignments, etc.
- Enter/leave predefined regions with online alerts
- Offline map-based reports to view trip history, with on-map trip replay
- Powerful, fully integrated trip report/map engine
- Automatically generate dozens of reports based on predefined parameters and send to designated recipients
- Easy integration with external ERP software
- Supports SMS and e-mail alerts



# WorldFleetLog

## Web-based Fleet and Fuel Management Solutions

### WorldFleetLog: For Your Bottom Line and Peace of Mind



View your fleet assets using secure login with configuration policies from any where in the world.

Detailed fuel reports provide deep analysis of fuel costs by vehicle, pump, job, or driver for any defined time-frame.

View vehicle location and events in real-time.

The Dashboard view provides fleet managers with important driver, vehicle, sensor state and fuel management information at a glance.

## WorldFleetLog Advantages

WorldFleetLog provides fleet managers with a large variety of analytical reports based on data gathered by EDT's in-vehicle and fuel management products. Fleet managers can then make critical, real-time decisions for increased productivity, improved safety and greater fleet profitability.

As a dynamic solution, WorldFleetLog easily integrates information from a wide variety of user-defined sensors to create tailor-made reports to suite specific requirements of your customer's unique business needs.

WorldFleetLog supports PDF, Excel and CSV data export formats and easily integrates with ERP programs for a truly integrated management solution.

WorldFleetLog is also accessible via EDT's World Fleet Smartphone app for iPhone, iPad, and Android devices.



Automotive Telematics, Fleet Management and Fuel Management Systems

www.e-drivetech.com E-mail: info@e-drivetech.com